

PAN ASIAN REPERTORY

T · H · E · A · T · R · E

Shanghai Lil'ä

A NEW MUSICAL

Book & Lyrics by Music by
Lilah Kan **Louis Stewart**

Directed & Choreographed by
Tisa Chang

October 15 - November 8, 1997
St. Clement's Theatre
423 West 46th Street, NYC
212-245-2660

TISA CHANG Artistic/Producing Director
presents the original hit musical

SHANGHAI LIL'S

Book & Lyrics
LILAH KAN

Music
LOUIS STEWART

Directed & Choreographed by
TISA CHANG

Set Design
ROBERT KLINGELHOEFER

Costume Design
TERRY LEONG

Light Design
STEPHEN PETRILLI

Slides
CORKY LEE

Sound Effects Design
DARRON L. WEST

Musical Director/Piano
ERIC K. JOHNSTON

Synthesizer
HEATHER EDWARDS

Production Stage Manager
LISA LEDWICH

Assistant Stage Manager
ELIS C. ARROYO

CAST

(in order of appearance)

Chase

MICHAEL MINN

Lil

BLOSSOM LAM

Sara

MIMOSA

Jerry

TIMOTHY HUANG

Hyacinth

EILEEN RIVERA

Peony

LIZA LAPIRA

Mei-Mei

DONNA ONG

Wally

MATT HYLAND

Pan Asian Rep employs members of Actors' Equity Association

Place: Chinatown, San Francisco
Time: 1941 - 1945

This production is supported in part, by the New York State Council on the Arts, a state agency; the New York City Department of Cultural Affairs and Time Warner Inc. for play development.

DIRECTOR'S NOTES

SHANGHAI LIL'S is Pan Asian Rep's tribute to that quintessential American theatrical form - the musical - and to Asian American pioneers on the cabaret circuit. I grew up in New York City watching musicals on stage and in films. Musicals embodied the American Dream where everything good could happen: boy and girl can meet, fall in love, thwarted in life and still end up happily ever after. Where else but in a musical can you dance with a mouse, or slosh around in the rain without catching pneumonia, or woo and marry a girl by riding up on a horse in a suit of armor?

Dancing replaces dialogue and in one dance number all personal crises and world issues can be resolved. **SHANGHAI LIL'S** choreography encompasses Latin influences, tap, ballet, Tai Chi and Peking Opera. English was my second language and I never talked in public till the 5th grade but I started dance classes at age 6. Movement allowed me to traverse terrain where verbal shyness precluded.

Pan Asian Rep has a demonstrated track record for excellence and professionalism in dramatic forms. With **SHANGHAI LIL'S** we salute those Asian American pioneer performers such as Larry Ching, Frances Chun, Toy Mar, Mary Mammon, Jack Mei Ling, Sono Osato, Yuki Shimada, Dottie Sun, Dorothy Toy, Noel Toy, Paul Wing, Tony Wing, Jadin Wong and American film legends - Fred Astaire, Ginger Rogers, Rita Hayworth, Gene Kelly, and others whose legacy is felt and revered today. **SHANGHAI LIL'S** also pays homage to the enduring strength of Japanese American internees and to all who saw action in diverse military campaigns during WWII.

Broadway, currently, has several shows featuring Asian American dancers and singers but this was not always the case. Together with the emerging generation of innovative, experimental, classic and comedic performers we represent a formidable phalanx to define 21st century consciousness and art forms.

Tisa Chang, Artistic/Producing Director

Pan Asian Rep extends Special Thanks to: Ernest Abuba, Lydia Gaston, John Haggerty, Fay Ann Lee, Jason Ma, Maria Muzelli, Adam Pollack, Sandy Pollack, Virginia Wing, Lu Yu, Steven Zhang, John Lum & ComZone, Westchester Broadway Theatre and New York Shakespeare Festival/Public Theatre. **A very special thank you to our playwright Lilah Kan for providing the catering for the Opening Night Gala.**

MUSICAL NUMBERS

Act I

DREAM TIME HOUR	Chase
UNCERTAIN TIMES	Lil
GROWING UP IS SO EXCITING	Sara
IT'S REALLY A HOME	Mei-Mei
WINGO (Dance)	Mei-Mei & Chase
IS IT REALLY POSSIBLE	Chase & Mei-Mei
THE SNEEZING JINGLE	Jerry & The Flower Sisters
AT SHANGHAI LIL'S	Entire Company
BALLROOM WALTZ	Mei-Mei & Chase
IT'S TIME TO DANCE	The Flower Sisters

Act II

JERRY'S FAREWELL	Entire Company
WAR DUET	Jerry & Chase
WALLY'S LAMENT	Wally & Mei-Mei
JERRY'S FAREWELL (Reprise)	The Flower Sisters
I'M CONFUSED BY MY FEELINGS FOR HIM	Mei-Mei
TAI-CHI BALLET (Dance)	Sara & Chase
MOON SONG	Sara
PATRIOT'S SALUTE	The Flower Sisters, Lil & Wally
FINALE	Entire Company

GLOSSARY OF CANTONESE WORDS & PHRASES

gick saw gnaw	gets my goat
saw low gung	crazy old man
siu yeah	midnight snack
hom sup low	dirty old man
Nay hoe lah mah Chun seen nigh?	How are you Mrs. Chun?
hoe! hoe!	good! good!
moong moong day	spacey, spacey
cha siu	Chinese bar-b-que
saw saw day	crazy, crazy
won won day	dizzy, dizzy
lop sop	garbage
jeah jeah	older sister
muey muey	younger sister
moe mun tai	no problem

WORLD WAR II CHRONOLOGY

- 1939 September Germany invades Poland, starting war.
- 1940 August Germany launches all-out air blitz on England.
September Japan joins Rome/Berlin Axis.
US men register in first peacetime draft.
- 1941 June US freezes German and Italian assets in America.
July US and Britain freeze Japanese assets.
September Roosevelt orders Navy to fire on Axis raiders in American defense zones.
December Japanese attack Pearl Harbor, Midway, Wake, Guam, Philippines, British Malaya, Hong Kong and invade Thailand.
US and Britain declare war on Japan.
US declares war on Germany and Italy.
- 1942 January 26 nations sign United Nation pact.
February President Roosevelt issues Executive Order 9066 for the internment of Japanese Americans on the West coast.
March MacArthur assumes command of UN forces in the Southwest Pacific.
May WAAC law creates Women's Army Auxiliary Corps.
July US Navy establishes the WAVES.
October US Army joins Marines on Guadalcanal and Tulagi.
- 1943 March 14th Air Force set up in China under Chennault.
May American Forces invade Attu in Aleutian Islands.
June American planes bomb Tarawa.
September American Marines invade Nanumea in Ellice group.
- 1944 January Allies land at Anzio; cross the Rapido River.
June US Marines invade Saipan in the Marianas.
August French troops enter Paris; Americans enter Reims, Nice and Verdun.
December Germans counterattack at Ardennes Forest to begin the Battle of the Bulge.
- 1945 February Americans enter Manila; US Marines land on Iwo Jima
- 1945 April President Roosevelt dies; Italian partisans execute Mussolini.
May Heinrich Himmler, German Gestapo chief, commits suicide.
July US Army explodes experimental bomb in New Mexico Desert.
August American plane drops atomic bomb on Hiroshima and Nagasaki.
September Japan surrenders formally aboard USS Missouri in Tokyo Bay.

Research Assistant: Auric Abuba

AN OVERVIEW OF JAPANESE INTERNMENT

In the early months of 1942, in the wake of the wartime panic which followed the Japanese attack on Pearl Harbor, the United States government assembled and banished 112,000 men, women and children, the entire Japanese-American population of the three Pacific Coast States of California, Oregon and Washington, from their homes and society to deserted areas.

Key Assembly Centers: Puyallup, WA; Portland, OR; Mayer, AZ; Marysville, Sacramento, Stockton, Tanforan, Turlock, Mercer, Salinas, Pinedale, Fresno, Santa Anita and Pomona, CA.

Barbed wire ringed communities bearing the name of Relocation Centers took shape during the spring and summer of 1942: Tule Lake and Manzanar, CA; Poston and Gila, AZ; Minidoka, ID; Topaz, UT; Granada, CO; Heart Mountain, WY; Rower and Jerome, AK.

Justice Department Internment Camps: Kennedy and Crystal City, TX; McCoy, WI; Kooskia, ID; Santa Fe and Lordsburg, NM; Missoula, MT; Angel Island, Sharp Park and Tuna Canyon, CA; Florence, AZ; East Boston, MA; Ellis Island, NY.

Citizen Isolation Camps: Sante Fe, NM; Bismark, ND; Crystal City, TX; Moab, UT; Leupp, AZ.

Eight months after the bombing of Pearl Harbor on August 7, 1942 all the West Coast Japanese-Americans had been rounded up, one way or another.

Compiled by Kannie Chung

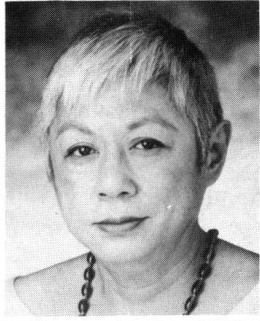
WARNING

The photographing, video or sound recording of any performance, or the possession of any device for such photographing, video or sound recording within this theatre, without the explicit permission of the management, is prohibited by law. Violations may be punished by ejection and may render the offender liable for monetary penalty.

Fire Notice: The exit indicated by a red light and sign nearest to the seat you occupy is the shortest route to the street. In the event of a fire or other emergency, please do not run, WALK TO THE EXIT. Thoughtless persons endanger the safety of others by lighting matches or smoking in prohibited areas during a performance or intermission. This violates a NYC ordinance and is punishable by law.

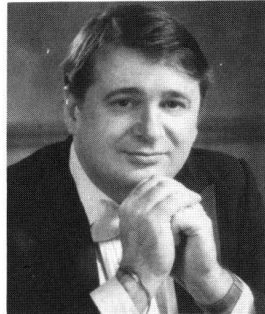
NYC Fire Commissioner

WHO'S WHO



LILAH KAN (Book & Lyrics) acted with San Francisco Inter Players in the 50's. NY acting debut: Frank Chin's **YEAR OF THE DRAGON**, American Place Theatre (televised for PBS's Theatre in America). Long time association with Tisa Chang's Pan Asian Rep as an a (**LEGEND OF WU CHANG, FLOWERS AND HOUSEHOLD GODS, SUNRISE, MONKEY MUSIC**) and was Geraldine Page's alternate in the Mirror Rep's revival of **RAIN** and acted in **PAPER ANGELS** directed by John Lone. Has cooked professionally in Israel and numerous NY restaurants to pursue a life in theatre. Holds the rank of *shodan* in Zen (Japanese) archery; author of **Chinese Casserole Cookery** (Workman Publishing, NY). Presently works as a water aerobics instructor. Member of The Dramatists Guild. **SHANGHAI LIL'S** is dedicated to her sons, Jeremy and Jonathan Spear, and granddaughter Ariel.

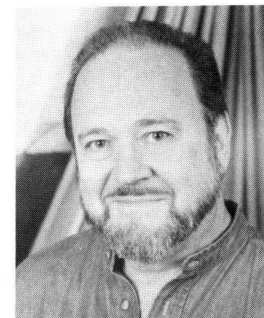
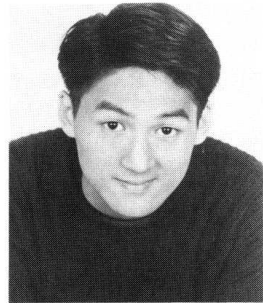
LOUIS STEWART (Music) holds a Master of Music in Orchestral Conducting from the New England Conservatory of Music and a Doctor of Musical Arts from The Peabody Conservatory of Johns Hopkins University. Specializing in New Music, he has conducted and played premieres in New York, Seattle, Boston and Baltimore, and has guest conducted in the US and Southeast Asia. One of his many acclaimed compositions is **BALLET BEAT CAFE** which was premiered by the American Concert Ballet, and its concert version was performed recently in Boston. His recordings include **SLEEPWALKING IN SINGAPORE**, in collaboration with the Baltimore Improvisation Ensemble, and scores for two documentary films aired on PBS. He is the recipient of a Meet the Composer grant for the dance work **IMMUTABLE GROUNDS**. This project renews a series of collaborations with Tisa Chang, which began in 1973 with the musical composition for **THE RETURN OF THE PHOENIX**, and continued with **HOTEL PARADISO, APOLLO OF BELLAC, A MIDSUMMER NIGHT'S DREAM, THE PURSUIT OF HAPPINESS**, and **CAMBODIA AGONISTES**. He currently teaches at Berklee College and Boston Conservatory.



TISA CHANG (Director & Choreographer) went from a school production of **GUYS AND DOLLS** as a *Hot Box* chorine to perform the choreography of the late greats: Jack Cole, Jerome Robbins, Gene Kelly and Bob Fosse (in respectively, **A FUNNY THING HAPPENED ON THE WAY TO THE FORUM** national company, **THE KING & I** revival, **FLOWER DRUM SONG** and **SWEET CHARITY**, both stock). She also danced and acted on Broadway in **LOVELY LADIES, KIND GENTLEMEN, BASIC TRAINING**

OF PAVLO HUMMEL, national company of **PACIFIC OVERTURES** and in films **AMBUSH BAY, ESCAPE FROM IRAN** and **YEAR OF THE DRAGON**. As a director she specializes in intercultural epics such as the bi-lingual **A MIDSUMMER NIGHT'S DREAM** for La Mama ETC, India's **GHASHIRAM KOTWAL**, China's **TEAHOUSE**, and Pan Asian Rep's **CAMBODIA AGONISTES** in collaboration with Ernest Abuba and Louis Stewart, which toured to Cairo and Johannesburg International Festivals in 1995. Tisa is active in public service and has been invited to India, Korea, Japan, Singapore, France and the former Soviet Union. She dedicates this production to the memory of her brother, James, United States Marine Corps/Vietnam.

TIMOTHY HUANG (Jerry) is a recent graduate of NYU's Tisch School of the Arts where he studied musical theater at CAP21 Conservatory. He is absolutely thrilled to be returning to **SHANGHAI LIL'S** and reprising his role from last May. Someone might recognize Tim as Jason Kim from the independent film **FREE COUNTRY**, which premiered last October. Other screen credits include the Coffee Boy on MTV's **APT. 2F**. Tim hopes to be rich and famous by next spring.



quartet, **Vocal Point**.

MATT HYLAND (Wally) After many years away from show business, Matt originated the role of *Wally* this past spring. Since then, he has appeared as Charles Harding Decker in the mystery, **FLIRTING WITH DEATH**. Theatre credits include **THE STUDENT PRINCE** (West Palm Beach Musicarnival), **BOYS FROM SYRACUSE** (Charles Street Playhouse, Boston). He was the male vocalist with Sammy Kaye's Big Band, featured soloist at Radio City Music Hall, and M.C./vocalist with Loki Ontai's Polynesians as well as one of the jazz/pop

BLOSSOM LAM (Lil) Native born to the Hawaiian Islands, began her music studies at the age of eight. She won a Hawaiian Electric Music Scholarship while in high school. She continued her music studies at the New England Conservatory of Music in Boston, MA earning her BA in Music Therapy with Honors. She worked at the Bedford V.A. Hospital in Bedford, MA. Her most recent principal roles were in **EATING CHICKEN FEET** and the **FLOWER DRUM SONG**. She currently teaches voice and piano privately. She has appeared on TV as a principal in each of the following productions: **UNSOLVED MYSTERIES**, a Rice & Roses production about the Union's history and in an American Savings & Loan commercial. She is the leader of **The Crystals**, a vocal group who has performed in the Artists-In-The-Schools program from 1988. By special request

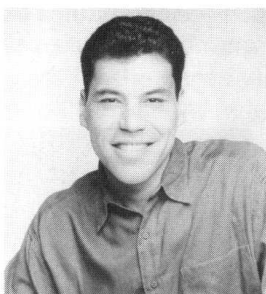


they continue to offer their program at schools. She is a member of SAG, AFTRA and NATS.



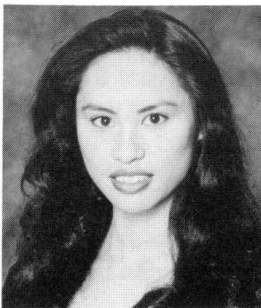
LIZA LAPIRA (Peony) attends NYU's Tisch School of the Arts where she was last seen in Marc Blitzstein's **THE CRADLE WILL ROCK**. She was a member of the CityKids National Touring Company for several years where performed with major talents in venues such as Radio City Music Hall, Manhattan Center and the Paramount. Most recently she performed for the 5 living presidents at the American Presidential Summit at Independence Hall. Liza would like to thank the CityKids Foundation, the faculty at CAP21 and the Lapira family for their support. She accredits all she has and will accomplish to God.

MIMOSA (Sara) is a graduate of University of Southern California with a Bachelor of Music in Doublebass Performance. She has been in numerous productions at East West Players, including **A CHORUS LINE** (*Cassie*) & **PACIFIC OVERTURES** which she also did with the San Jose CLO & Music Theatre of Oregon. Since moving to NYC, she was seen in **ALDO & HIS MAGIC LAMP** (Vineyard Theater), **SAYONARA** (Fireside Theatre), **THE FALL GUY** (Playhouse 91) co-directed by her parents Shizuko Hoshi & Mako. **A VISIT FROM THE FOOTBINDER** (Lincoln Center) and most recently **LITTLE MISS BUDDAH** which she co-wrote with the all female all Asian writing/performing group **Killer Geishas A Go-Go**.



MICHAEL MINN (Chase) **FUNNY GIRL, SINGIN' IN THE RAIN** (Carousel DT); **SWISS FAMILY ROBINSON, SECRET GARDEN** (Theatreworks/USA); **ON THE TOWN** (Casa Mañana); **MY ONE & ONLY** (Allenberry P'house). TV: **THE CITY, ALL MY CHILDREN, NY UNDERCOVER**. Education: North Texas State, AMDA. Special thanks to Mom & Dad, Dick Andros, Lisa Hopkins, Alan Onickel & Fred Astaire.

DONNA ONG (Mei-Mei) Donna makes her debut performance as Mei-Mei in **SHANGHAI LIL'S**. She is currently finishing up a season with The Central Park Wildlife Theatre, has toured Europe as *Shelia* in the musical **HAIR** and has starred in the just released independent feature **YONI**. She has also done industrial and voiceover work and is currently on tour with the band **Noo VooDoo**. Donna gives thanks to God, GS and the home team.



EILEEN RIVERA (Hyacinth) was just seen this summer at the Vineyard playing *Susan* in Ma-Yi Theatre Ensemble's production of **A PORTRAIT OF THE ARTIST AS FILIPINO**. **SHANGHAI LIL'S** marks her second production with Pan Asian Rep; her first was the musical play **CAMBODIA AGONISTES**. Other credits include **THE SCHOOL FOR WIVES** (NATCO) and **PINAYTOK** (Ma-Yi). She recently wrapped the independent film **TRIO SONATA** and has appeared on **LAW & ORDER**. Her BFA in Acting is from Boston University. Eileen wishes to thank Michael, Chris, Elaina and Mom for their unconditional love, and Kelly for his unwavering support.

ELIS C. ARROYO (Assistant Stage Manager) has had the distinct pleasure of working with Pan Asian Rep on its productions of **FRIENDS, LETTERS TO A STUDENT REVOLUTIONARY, FAIRY BONES, THE DRESSING ROOM, CAMBODIA AGONISTES**, and **THE INNOCENCE OF GHOSTS**. He has also worked for Westchester Broadway Theatre, National Shakespeare Company, INTAR and The Public Theatre.

HEATHER EDWARDS (Synthesizer) is from the Bay Area and gave her first performance as a classical pianist at age 7. She graduated from Berklee College of Music in 1990. Heather has performed as a soloist, as well as with orchestras and bands of many musical styles including jazz and funk, along with her own compositions. Heather has recently toured South America with **PHANTOM OF THE OPERA**. Other musicals include **MUSIC MAN** (Pianist/Musical Director), **ANNIE** (Pianist/Synthesizer), and **FAHRENHEIT 451** (Pianist/Assistant Musical Director). Heather has also performed as an actress in theatre, film and television.

ERIC K. JOHNSTON (Musical Director/Pianist) is happy to return with **SHANGHAI LIL'S**, having also served as musical director for the premiere production last spring. In the meantime, he had a busy summer as musical director for the Mt. Washington Valley Theatre Company in North Conway, New Hampshire. A native of Ohio, Eric was Resident Accompanist/Music Director for the Human Race Theatre Company in Dayton, Ohio, where some of his credits include **FALSETTOLAND, CLOSER THAN EVER, THE GIFTS OF THE MAGI, THE ROCKY HORROR SHOW, AND THE FANTASTICKS**. Eric first became involved in musical theatre at the age of 5 and has been playing piano for musicals since he was 12.

ROBERT KLINGELHOEFER (Set Designer) has been the Resident Designer at Pan Asian Rep for the last four seasons. He has designed ten productions including **AND THE SOUL SHALL DANCE, WILDERNESS, YELLOW FEVER, A DOLLS HOUSE, CAMBODIA AGONISTES, and PRIVATE LIVES**. Concurrently, Mr. Klingelhoefer is the Resident Designer for the 9th season at the Fulton Theatre Company in Lancaster, PA, where he has designed over 30 productions. His

credits also include work for The Acting Company, Shakespeare Theatre, DC, Asolo Theatre Co., Cricket Theatre, Yale School of Music, Westside Theatre, Puerto Rican Travelling Theatre and NYS Theatre Institute. Mr. Klingelhoef has had affiliations as Guest Artist or Adjunct Faculty member at the University of South Carolina, Montclair State College and Dickinson College.

LISA LEDWICH (Production Stage Manager) has worked here at Pan Asian Repertory Theatre on a number of shows, including **CAMBODIA AGONISTES**, **THE INNOCENCE OF GHOSTS**, **PRIVATE LIVES**, **YELLOW FEVER**, and **WILDERNESS**. Most recently she stage managed **HARD TIMES** at Pearl Theatre Co. Other credits include **ROMEO AND JULIET**, **MACBETH**, **THE TEMPEST**, and **A MIDSUMMER NIGHT'S DREAM**, for Westery Shakespeare in the Park, in Rhode Island, and has worked at the New York Shakespeare Festival, San Diego Repertory, and The Colonial Theater.

TERRY LEONG (Costume Designer) has designed costumes for many TV commercials and Off-Broadway productions. Among Mr. Leong's numerous design credits are: Yoko Ono's **NEW YORK ROCK** at the WAP Theatre, **LOOKING FOR LOVE IN DARKNESS** at the American Theatre for Actors, **WILTING'S** and **THE MISANTHROPE** for Staten Island College, **PRIVATE LIVES** for Pan Asian Rep, **THE TAMING OF THE SHREW** at the National Shakespeare Company, **DEATH OF A SALESMAN** at the Theatre Company, **DRACULA** at Theatrefest (Montclair State College), **AWAKE AND SING** for the Sackett Group at Westbeth Theatre and **THE SEAGULL** for the Cincinnati Playhouse. Mr. Leong has also designed costumes for Barbra Streisand and is mentioned in detail in Barry Dennen's new book, **MY LIFE WITH BARBRA A LOVE STORY**.

STEPHEN PETRILLI (Lighting Designer) designed the premiere of **SHANGHAI LIL'S** last spring as well as several shows for New York's Pearl Theatre Company, Westbeth Theatre Center and Equity Library Theatre, for The Oil and Water Dance Project, and for Performance Artist Judith Ren-Lay. Regionally he has worked for Austin's Live Oak Theatre, Theatre Rhinoceros in San Francisco and the Three Rivers Shakespeare Festival in his hometown of Pittsburgh. Stephen spent five years touring as the Lighting/Sound Supervisor for Pilobolus Dance Theatre, and is about to tour with Complexions.

DARRON L. WEST (Sound fx Designer) Design Associate and "usual suspect" at New York Theatre Workshop (NYTW). Company member and Soundscapes for Anne Bogart's Saratoga International Theatre Institute (SITI Co.). With NYTW: a myriad of productions including: **QUILLS**, **THE SECRETARIES**, and Jonathan Larson's **RENT**. With Bogart and SITI Co. numerous productions in the States and internationally of: **THE MEDIUM**, **SMALL LIVES BIG DREAMS**, **GOING GOING GONE**, **MS. JULIE** and most recently the world premiere of **CULTURE OF DESIRE** at Pittsburgh City Theatre. Other credits include multiple productions with: New York Shakespeare Festival/The Public, The Acting Company, Circle Repertory, The Vineyard, PS 122, The American Music Theatre Festival, Philadelphia Theatre Co., SoHo Rep and La Jolla Playhouse.

He is a two time American Theatre Wing and Barrymore Award Nominee for Sound Design and Former Resident Sound Designer Actors Theatre of Louisville.

RUSSELL MURPHY (General Manager) has been with Pan Asian Rep since 1987. He has a BA in Dance from Point Park College and has a broad performance background. After retiring from performing, Mr. Murphy spent three years in a "real" job, then returned to the arts as an administrator. He has worked as an usher, box office manager, company manager and office manager before rising to his current position. Mr. Murphy is a Deacon of Metropolitan Community Church of NY and a Co-Coordinator of Heritage of Pride, organizers of NYC's Gay and Lesbian Pride events.

**PAN ASIAN REP IS PART OF THE GROUND BREAKING
3 by 3**

with INTAR and New Federal Theatre
3 DYNAMIC CULTURES! 3 LIVING INSTITUTIONS! 3 EXCITING PLAYS!
February 18 - May 16, 1998

ALOHA LAS VEGAS

BY EDWARD SAKAMOTO

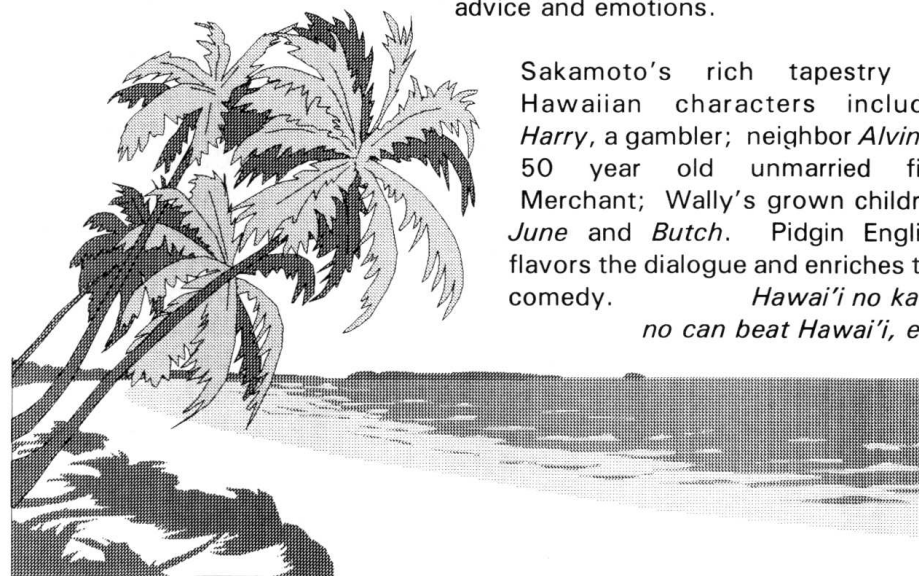
APRIL 16 - MAY 16, 1998

DIRECTED BY RON NAKAHARA

This is Edward Sakamoto's 4th Family comedy produced by Pan Asian Rep. Widower *Wally Fukuda* considers a move from the Hawaiian Islands to Las Vegas to Start a new life. His family and friends are thrown into a tizzy of conflicting advice and emotions.

Sakamoto's rich tapestry of Hawaiian characters include: *Harry*, a gambler; neighbor *Alvin*, a 50 year old unmarried fish Merchant; Wally's grown children *June* and *Butch*. Pidgin English flavors the dialogue and enriches the comedy.

*Hawai'i no ka oi
no can beat Hawai'i, eh?*



FRIENDS OF PAN ASIAN REPERTORY THEATRE

Donations received 9/01/96 - 9/15/97

Donations below \$50 cannot be listed due to lack of space, but are greatly appreciated.

Names in bold indicate the 1997 CLUB

Supporters of Pan Asian Rep's NEA Challenge Grant

PACESETTERS

\$25,000 and up

AT&T Foundation
**National Arts
Stabilization
National
Endowment for
the Arts**
NYC Dept of
Cultural Affairs
NY State Council
on the Arts
**The Starr
Foundation**

PRODUCERS

\$5,000-\$24,999

Anheuser-Busch
Companies
The Chase
Manhattan Bank
The Fan Fox and
Leslie R. Samuels
Foundation
C.J. Huang
Foundation
The Joyce
Mertz- Gilmore
Foundation
**J.P. Morgan &
Company Inc.**
Metropolitan
Life Foundation
The Shubert
Foundation

ANGELS

\$1,000-\$4,999

Actors' Equity
Foundation
American Express
Companies
Axe-Houghton
Foundation
Bell Atlantic
Kim S. Chan
Jeff &
Suk-Kun Chin
Bernard B. Cohen
Ernst & Young
Joseph H. &
Hallie R. Levie
Thomas Liu
Alfred &
Sybil Nadel
Philip Morris
Companies
**Thomas &
Jill Ruppel**
Mr. & Mrs.
Nathaniel Spear III
William F. Truscott
UNITE,
Local 23-25

BACKERS

\$500-\$999

Ernest Abuba
**Julie Azuma &
Tamio Spiegel**
Irwin Jacobs

Jeanne Lee
Jackson
The John-Vincent
Peter Copani
Memorial
Foundation for
the Arts
Helena H. Yu

PATRONS

\$250-\$499

Anonymous
Tina Chen
N.Y. Cosmopolitan
Lions Club
Dr. Carole Shaffer-
Koros & Dr.
Robert M. Koros
**Dr. Richard & Mrs.
Melmie Lee Young**

SPONSORS

\$100-\$249

Norma Abdulah
Christa Armstrong
**Howard &
Joy Bauman**
Eugene Black
Jean S. Chan
Donna Chancellor
Tisa Chang
H.T. Chen
**Hon. Dorothy
Chin-Brandt**
William Craver

Bonnie &
Jim Crown
Frank G. Eng
Rose & Philip Eng
Stanley C. Eng
Expedi Printing
**John &
Marsha Flock**
Jane Harmon
**Sheldon &
Margery Harnick**
Michael J.
Hirschhorn
David Henry
**Hwang &
Kathryn Layng**
James Jung
Lilah Kan
Elaine &
Dong Kingman
Michelle Kleier
Namlyn R. Kong
Robert Kujalowicz
**George &
Barbara Lapnow**
James & Dori Lee
Marjorie S. Loggia
Richard Lombard
Karl R. Lunde
Kelvin Mark
J.T. Marshall
Vincent &
Corinne Moy
Russell Murphy
**Charles &
Elaine Chen Nash**
Tami T. Ogata
Natsuko Ohama
Ai Lien &
Fen C. Ong
**Carolyn
Chan Philip**
Keenan Shimizu &
Erika Honda
Kathryn Tanaka

Ken &
Patricia Taylor
Nancy Tom
Adriana Trigiana
Ralph Walther
Lisa J. Weir
Ellen H. & Takeshi
Yoshiuchi
Angela Yu
Lu Yu

SUPPORTERS

\$50-\$99

Susanne Acosta
Billie Allen
Susan Ancheta
**Ruth &
Victor Ancona**
Anonymous
Asian CineVision
Vivian Wu
Alleyne Chin
Joanne Edgar
Donald W. Fowle
Friends of Eileen
C. Dugan
Jon Ho
Dr. & Mrs.
Peter Huang
Mary Kantor
**Arlene Kimata &
Gary Kitahata**
John Liu
Etsuko Lockhart
Jason Ma
**Henry &
Ruiko Moritsugu**
Ron Nakahara &
Frances Barth
Nobuko Cobi Narita
Edward Sakamoto
John J. Shields
Earl &
Ricki Shimabukuro
John H. &

Barbara Shiota
**Ann Umemoto &
Dr. Richard
Younge**
Barbara Whitmore
Linda Young

IN KIND

Joe Andoe
Anheuser-Busch
Companies
Tisa Chang
Tina Chen
Camille Colon
Ted Killmer
David Kniazuk
Lisa Ledwich
John Lum/
ComZone
Materials for the
Arts, a program of
NYC's DCA &
Dept. of Sanitation
William Wegman

MATCHING

Citicorp/Citibank
Exxon Corporation
IBM
J.P. Morgan &
Company, Inc.
Johnson & Higgins
The Chase
Manhattan Bank
The Morrison &
Foerster
Foundation
The Times
Mirror Company
Time Warner, Inc.

OUT OF THE WHEELCHAIR

AND
INTO
THE

FIRE!



By Esther Goodhart &
Stewart M. Schulman

Starring Esther Goodhart
Oriental Beauty

NOVEMBER 12 - 15 ONLY!

*She's Korean! She's Jewish!
She's a Comedian/Wife/Mother/Slave!*

*Esther's brand of in-your-face comedy: is not gentle!
is not harmonious!
is not China-doll sweet!*

She's no Suzy Wong!

Tickets: \$30
Opening Night Gala, Wednesday Nov. 12, \$60.

St. Clement's Theatre
423 West 46th Street
212-245-2660

PAN ASIAN REP BOARD OF TRUSTEES

Donna Chancellor, Tisa Chang, Jeff Chin,
Muzaffar Chishti, Esq., David L. Kim, Joseph H. Levie,
Sybil G. Nadel, Ed.D., and Ellen Yoshiuchi

PAN ASIAN REP HONORARY ADVISORS

Julie Azuma, Tina Chen, David Henry Hwang, Ming Cho Lee, Lu Y.
Simone Yen Song, Esq., Ellen Stewart and Patricia Taylor, Ph.D.

**PAN ASIAN REP SENIOR ARTISTS
and RESIDENT ENSEMBLE MEMBERS**

Michael G. Chin, Carol A. Honda, Kati Kuroda, Ron Nakahara,
Natsuko Ohama, Keenan Shimizu and Christen Villamor

PAN ASIAN REP STAFF

Artistic/Producing Director	Tisa Chang
Artistic Associate	Ron Nakahara
General Manager	Russell Murphy
Communications Associate	Peggy Cheng
Administrative Assistant	Jodi Lin
Photo Archivist	Corky Lee
Graphic Designer	Ken Chu
Auditors	Michael Lee & Co., CPA's
Legal Counsel	Hom & Hsiung
Set Construction	Alan Fackler & Associates
Technical Director	Gerard P. McCarthy
Master Electrician	James Vreeland
Dance Assistant	Perry Yung
Sound Operator	Meredith Rae Kasten
Box Office Treasurer	TanNa Young
Peking Opera Consultant	Lu Yu
Production Assistant	Samhwa Moon
Production Intern	Jill Bortner

Pan Asian Repertory Theatre
47 Great Jones Street
New York, NY 10012-1114
212/505-5655; Fax: 212/505-6014
PanAsian@aol.com