



[+About](#)

[+Properties for Rent](#)

[+Completed Projects](#)

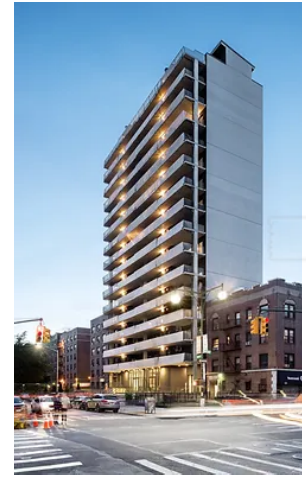
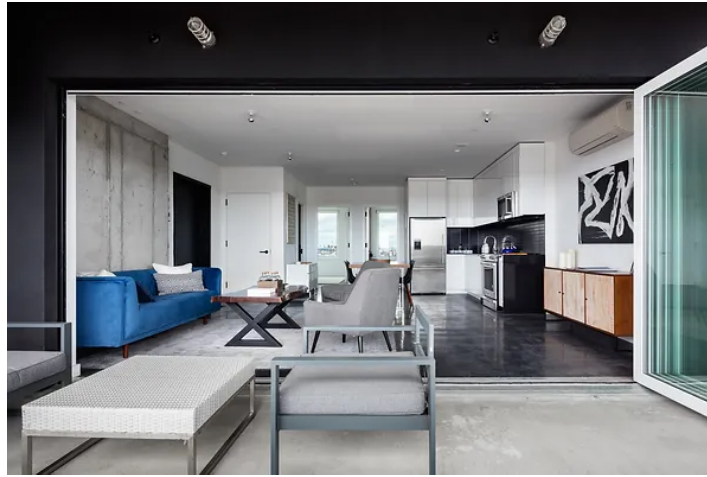
[+Under Development](#)

[HELLO Blueprint](#)

[HL Social](#)

[Contact](#)

[Peo](#)



Photos

Floorplan

Hello Lenox - Interior



Hello Lenox - Amenities



HELLO LENOX

271 Lenox | 56 Luxury Rental Units | Completed 2017

271 Lenox soars 140 feet above Prospect Lefferts Gardens. It's industrial-chic architecture is in line with the likes of many Soho & Tribeca luxury buildings. With floor through open layouts, private elevators opening directly into each unit, chef quality stainless appliances and expansive private outdoor terraces with bi-fold glass doors that extend your living space into the horizon.

Every apartment layout is meticulously considered to maximize functionality for residents. Each apartment boasts open layouts and far-reaching north and south views, private elevator entrances, private terraces, large windows that provide expansive light and fresh air, stainless steel appliances combined with custom chef kitchens, Washer & Dryers, and polished concrete floors.

Features

- Flow-Through Units
- Private Elevators Opening Directly Into Each Unit
- Expansive Private Terraces
- Highly Insulated Triple-Paneled Windows and Doors
- Open Unit Layouts
- In-Unit Laundry, Dishwasher
- 32 Parking Spaces
- Q Train at Parkside Ave
- 2 & 5 Express Trains at Winthrop St
- Gym, 2nd Floor Roof Deck, Parking Garage, Bicycle Storage
- 30 Minutes From Midtown Manhattan

Neighborhood

Immerse yourself in PLG, a culturally diverse neighborhood filled with tree-lined streets, classic brownstones and is a short walk to Prospect Park. PLG offers quiet streets, mom & pop stores, restaurants, cafes, and a 30 minute commute to Manhattan.

Prospect Lefferts Garden (PLG) is located directly to the east of Prospect Park, opposite Park Slope, south of Prospect Heights, and north of Ditmas Park, which are all million dollar neighborhoods. PLG shares several qualities with neighborhoods such as Park Slope, Fort Greene, Clinton Hill, Prospect Heights, and Crown Heights, which have seen tremendous appreciation and growth over the years. These commonalities include proximity to parks for recreation, hospitals and universities that provide employment and draw new residents each year, historic architecture, and an easy commute to Manhattan. Real estate surrounding Prospect Park is especially limited and PLG is one of the few neighborhoods in this area that still has potential for development and equity.

Hello Lenox is located right on Lenox Road by Nostrand Avenue.



COPYRIGHT 2017 HELLO
LIVING

